

VIEW ONLINE 

colliers.com/p-USA1055688



PORTSIDE

DISTRIBUTION CENTER

Trade Center Parkway, Summerville, SC
±43,416 SF to ±400,000 SF Available

Mark Erickson, SIOR
Vice President
+1 843 720 7501
mark.erickson@colliers.com

Chuck Salley, SIOR
Vice President
+1 803 401 4266
chuck.salley@colliers.com

Dave Mathews, SIOR
Vice President
+1 803 401 4293
dave.mathews@colliers.com

Thomas Beard
Brokerage Associate
+1 803 401 4247
thomas.beard@colliers.com



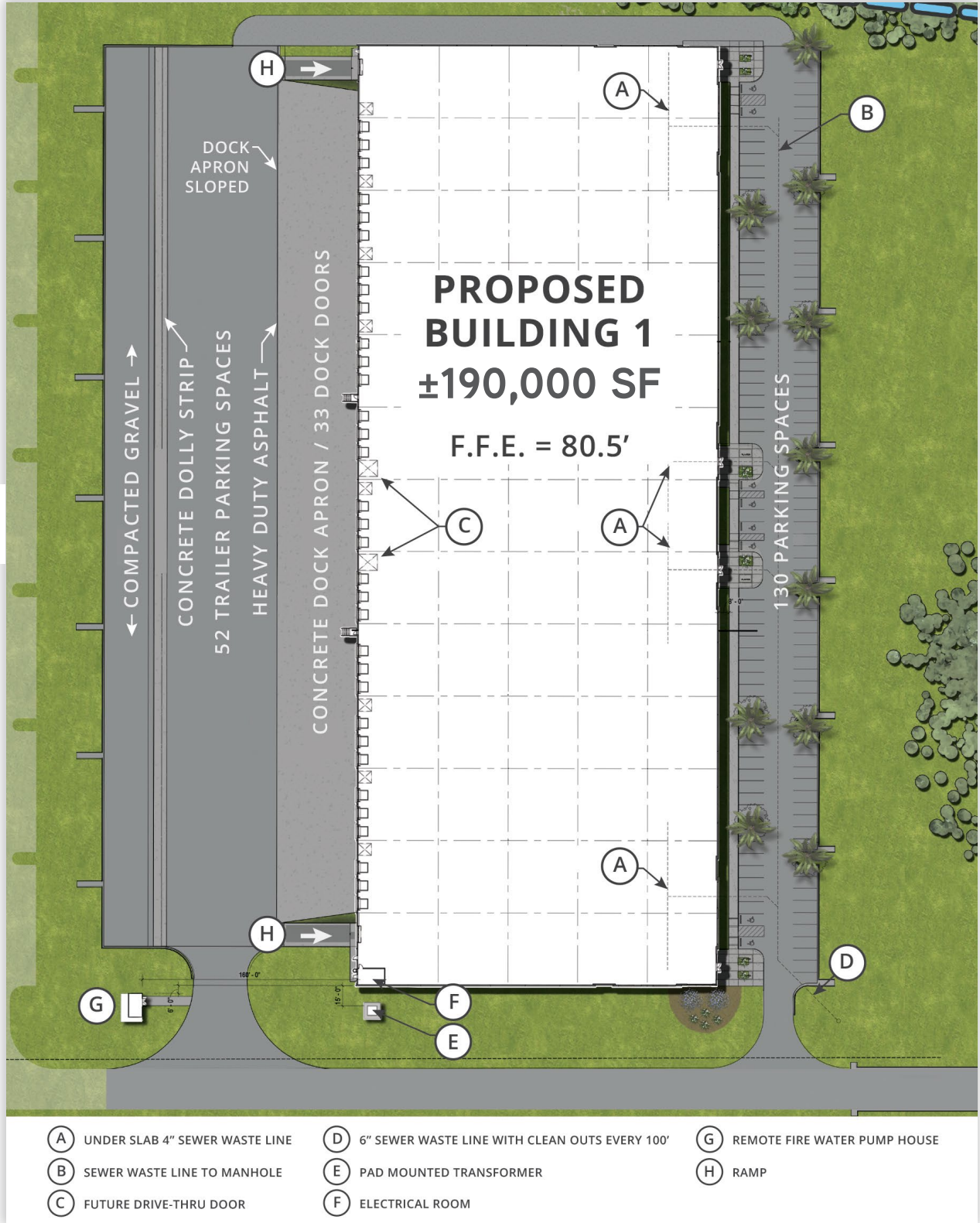


THE DETAILS

Project Completion	Q3 2019
Site Acreage	±31 acres
Building 1 Dimensions	±190,000 SF 268' x 702' Divisible to ±43,416 SF
Building 2 Dimensions	±200,000 SF (future)
Clear Height	32' minimum
Auto Parking	123 spaces
Trailer Parking	190' truck court with additional space for dolly parking 52 spaces
Dock Doors	(33) 9' x '10' dock-high doors with dock seals (4) 20' x 20' drive-in doors

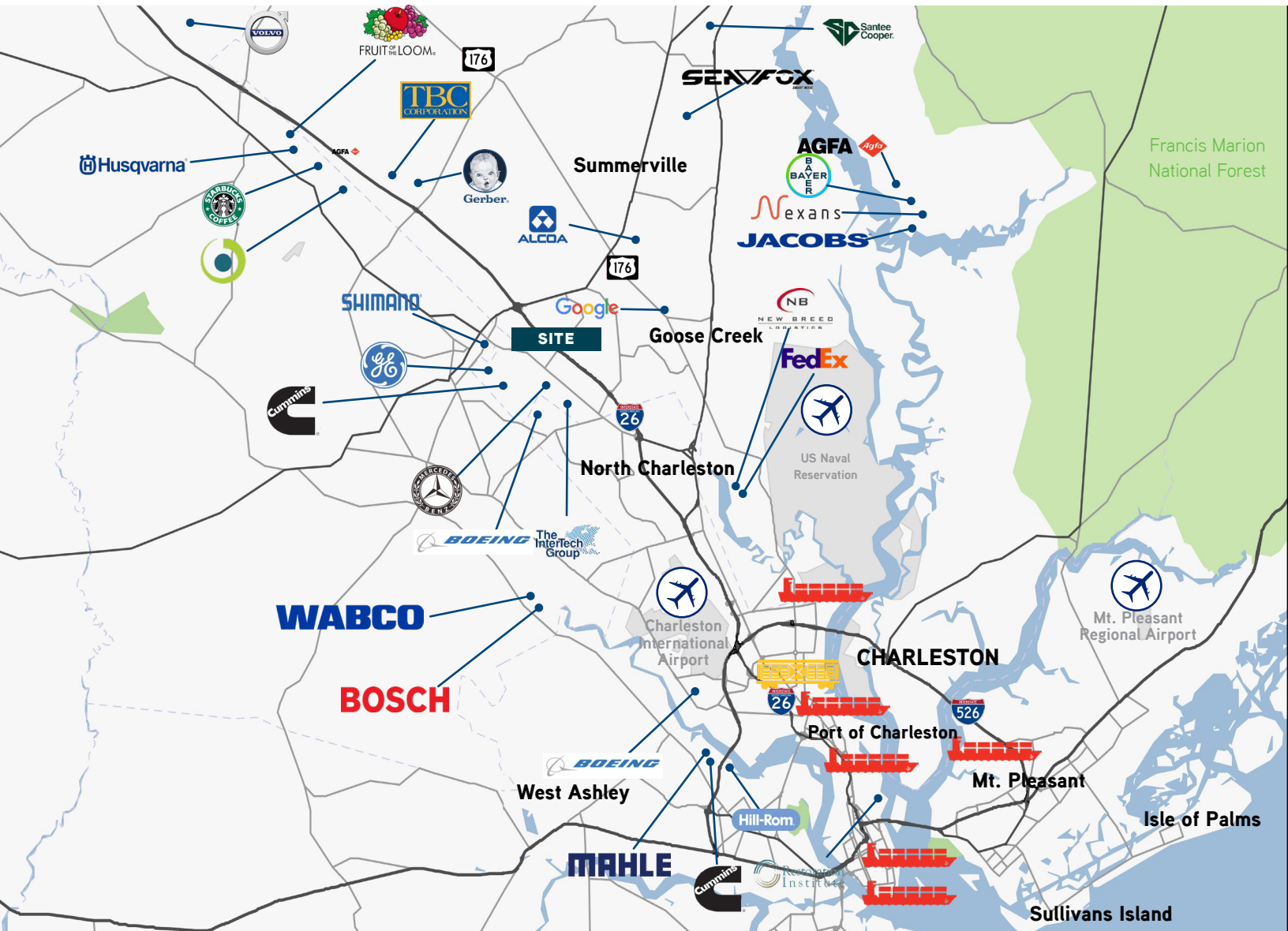
Walls	Tilt-up concrete panels
Roofing	White TPO 60-mil roofing membrane
Floors	6" concrete slab 4,000 PSI
Fire Protection	ESFR Sprinkler System
Zoning	Heavy Industrial
Lighting	LED fixtures
Fencing	Fully-fenced 31 acres
Column Spacing	54' x 52' spacing Each bay is ±14,472 SF 60' speed bay
Lease Rate	\$5.85 PSF NNN

BUILDING ONE | Site Plan

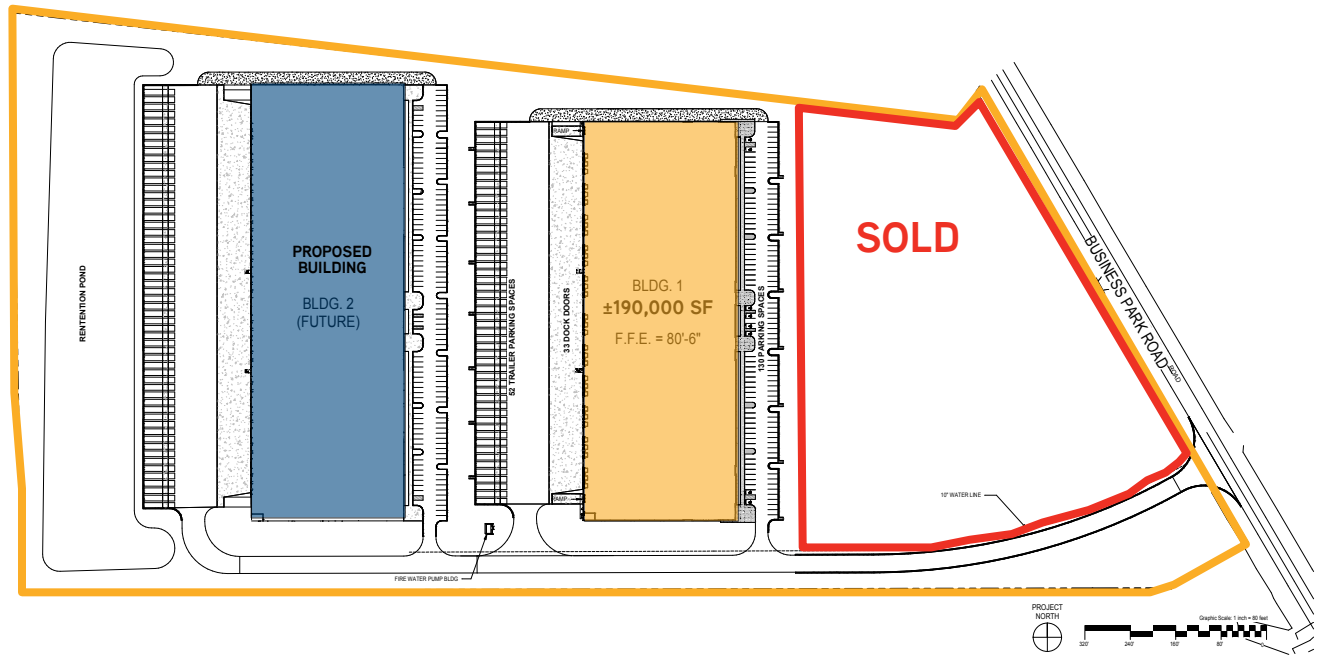


LOCATION IS KEY

The strategic location in the Charleston Distribution Corridor has superb access by land, air or sea. Charleston is connected to three interstates, I-26, I-526 and I-95, which provide short drive-time access to major markets like Charlotte, NC; Atlanta, GA; Columbia and Greenville, SC; as well as as most of the East Coast within a matter of hours. The property is within 30 miles of all Port of Charleston terminals.



North Charleston Terminal	21.1 miles	I-526	19.5 miles
Wando Welch Terminal	28.9 miles	I-26	5.4 miles
Columbus Street Terminal	25.8 miles	I-95	32.8 miles
Union Pier Terminal	26.7 miles	CHS Airport	19.8 miles
Veteran's Terminal	22.3 miles	Norfolk Southern & CSX Hubs	10.1 miles
Leatherman Terminal	25.0 miles		



ABOUT

Portside Distribution Center is a brand new, Class A industrial development totaling nearly 400,000 SF and situated on 31 acres in the Charleston Distribution Corridor. Portside is being developed by Randolph Development.

The new development is able to accommodate a variety of users, including logistics companies, aerospace and automotive suppliers, defense contractors, light manufacturers and last-mile distribution,



DRIVE TIME MAP

LEGEND



25 minutes



24 minutes



18 minutes



25 minutes



76 minutes



88 minutes



83 minutes



142 minutes

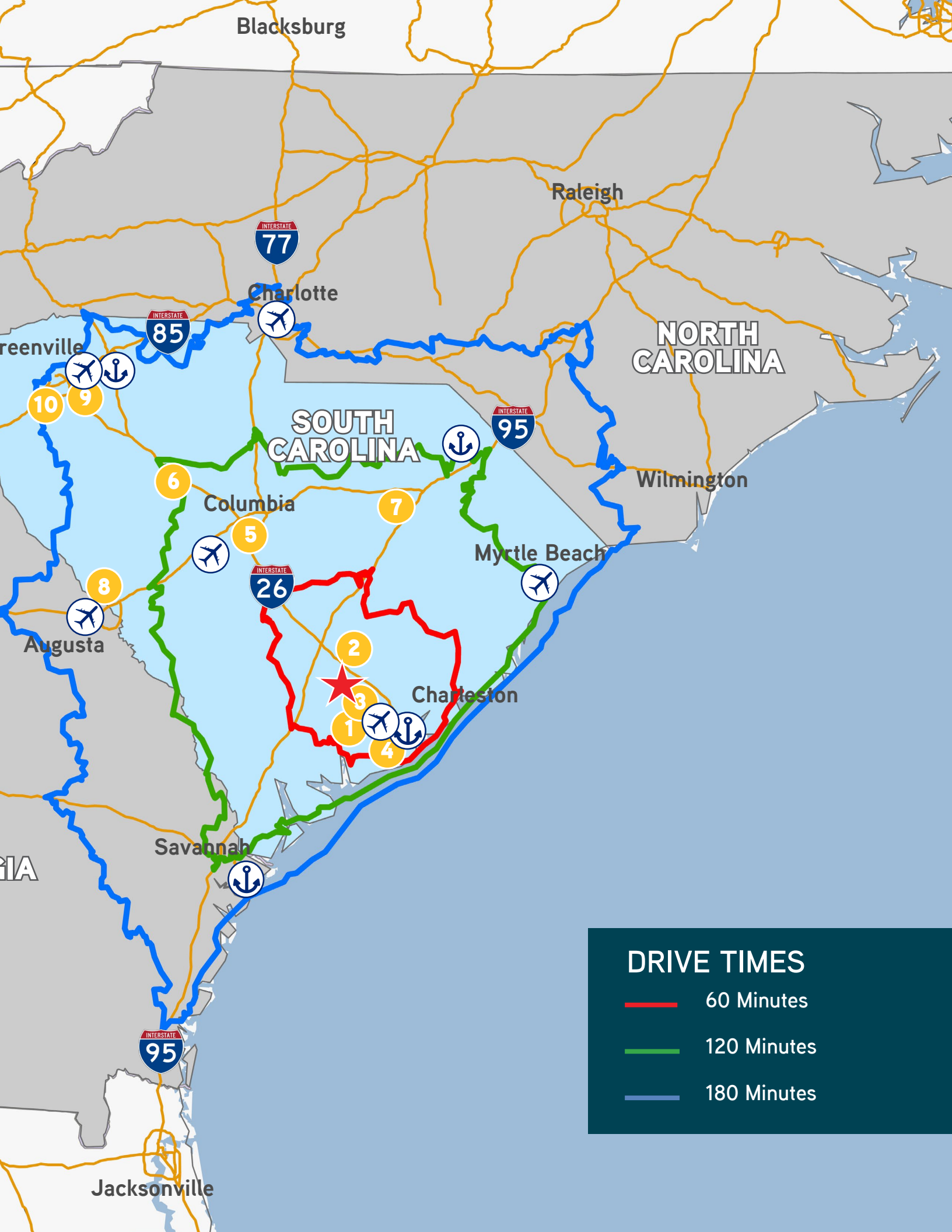


159 minutes



160 minutes





Blacksburg

Raleigh



Charlotte



Greenville



10

9

NORTH CAROLINA

SOUTH CAROLINA



6

Columbia

7

Wilmington

5



Myrtle Beach



Augusta

8



2

Charleston



3

1



4

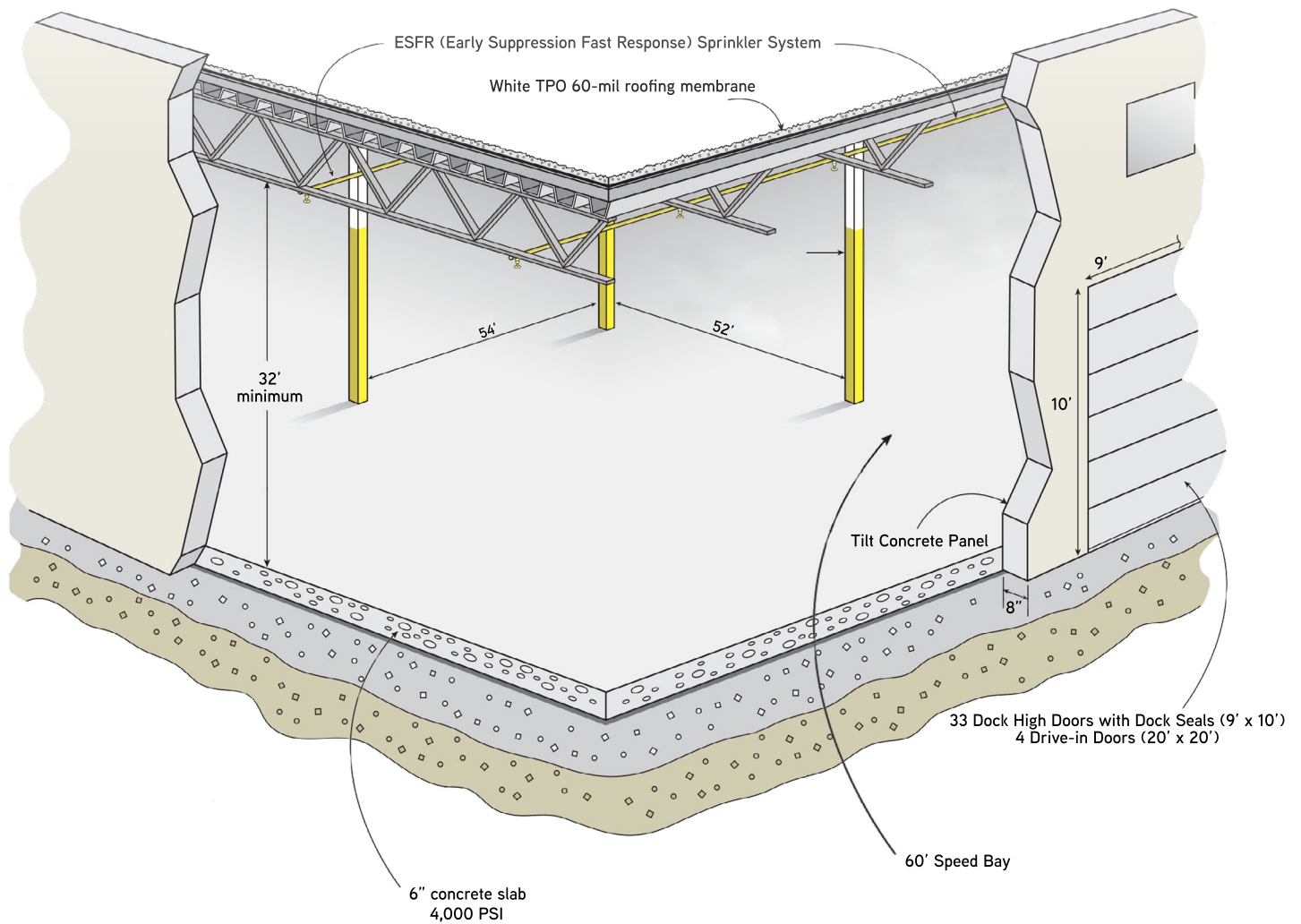


FLORIDA

Savannah



Jacksonville



PORTSIDES

DISTRIBUTION CENTER

Trade Center Parkway, Summerville, SC
 ±43,416 SF to ±400,000 SF Available

Mark Erickson, SIOR
 Vice President
 +1 843 720 7501
 mark.erickson@colliers.com

Chuck Salley, SIOR
 Vice President
 +1 803 401 4266
 chuck.salley@colliers.com

Dave Mathews, SIOR
 Vice President
 +1 803 401 4293
 dave.mathews@colliers.com

Thomas Beard
 Brokerage Associate
 +1 803 401 4247
 thomas.beard@colliers.com



Colliers International | 134 Meeting Street, Suite 100 | Charleston, SC 29402 | 843.723.1202 | colliers.com

This document has been prepared by Colliers International for advertising and general information only. Colliers International makes no guarantees, representations or warranties of any kind, expressed or implied, regarding the information including, but not limited to, warranties of content, accuracy and reliability. Any interested party should undertake their own inquiries as to the accuracy of the information. Colliers International excludes unequivocally all inferred or implied terms, conditions and warranties arising out of this document and excludes all liability for loss and damages arising there from. This publication is the copyrighted property of Colliers International and/or its licensor(s). ©2017. All rights reserved.

